



# Soccer . . . the game for All kids!®



[www.dublinsoccerleague.com](http://www.dublinsoccerleague.com)

May 2007

## EVENTS CALENDAR

May 1	Open Registration begins
May 19	DSL spring season ends
June 10	<b>Registration ENDS</b>
June 30	<b>Refund request deadline</b>
July 4	Independence Day Parade
August	Team rosters mailed to coaches
Sep 1-2	Dublin Soccer League Charity Cup Tournament at Avery and Darree
Sep 8	DSL fall season starts
Oct 27	DSL season ends



## SUMMER SOCCER CAMP INFORMATION

Can't get enough soccer? Can't wait until fall? Then check out some of the camps available in our area.

City of Dublin Recreation Services  
[www.skyhawks.com](http://www.skyhawks.com)

Columbus Crew Soccer  
[www.thecrew.com](http://www.thecrew.com)

Great Britain Soccer Camp (Gerry D'Arcy)  
[www.otterbein.edu/athletics](http://www.otterbein.edu/athletics)

Jerome HS Soccer (Grades 1—8)  
[www.dublinjerome.net](http://www.dublinjerome.net)

Locker Soccer Academy (Steve Locker)  
[www.lockersoccer.com](http://www.lockersoccer.com)

OSU Women's Soccer Camp  
[www.ohiostatebuckeyes.com](http://www.ohiostatebuckeyes.com)

The Summer Soccer School (Kevin Dougherty), [www.opsoccer.com](http://www.opsoccer.com)

## REGISTER NOW THROUGH JUNE 10TH FOR 2007-2008

### To register:

1. Use the preprinted form received from your current coach.
2. Visit the DSL website for a fill in, printable PDF form (must fit on one sheet).
3. Use the enclosed form, making sure that all information is printed and legible; the form may be duplicated.
4. Come to the DSL office Thursdays 10 - 5 to register in person (checks or cash accepted).

### Please remember to:

1. Complete all information on the form; please, **print legibly**.
2. Sign the form.
3. Include a check (payable to DSL) for full payment.
4. Include a photocopy of birth certificate or passport page if the player is new to Dublin Soccer League.

Forms may be mailed to DSL, PO Box 501, Dublin OH 43017 or delivered to the office. DSL is not responsible for lost or misdirected mail.

**Processing of registrations may be delayed if information is missing, there are outstanding fees owed from a previous season, or requested birth date verification has not been supplied.**

## THE WINDS OF CHANGE CONTINUE . . .

The Dublin Soccer League programs have been in transition for several years, primarily as a result of an endorsement from US Youth Soccer of small sided games as a response to the steady demise of street soccer worldwide. Initially, this meant adopting a 3 v 3 format for U6 and 4 v 4 for U7. In fall of 2006, U8 started playing 6 v 6. Following the changes instituted for travel soccer, U9 and U10 will also change to 6 v 6 beginning in fall, 2007; U11/12 will play 8 v 8. MSSA and HSSA will continue to play 11 v 11. This translates into smaller roster sizes for U9, U10 and U11/12, more teams and more coaching opportunities.

Playing 3 v 3 in U6, for example, allows for frequent ball contacts, the development of basic motor skills and increased interaction with team mates in a less cluttered environment. There are coaching "themes" for each age group that address a child's love for "play" based on their needs. To find out more about creating the ideals of street play in an organized soccer world and the program adopted by the US Youth Soccer National Coaching Committee in February 2002, visit [USYouthSoccer.org](http://USYouthSoccer.org).

One might ask why change the recreation program too? Well, given that there are several area leagues that use the playing fields at Avery Park and Darree and for whom DSL assigns fields, there is a need for consistency in both field and goal size. This allows DSL to fit the number of fields needed in the available space at each site and keep field set-up and lining costs down.

## DUBLIN SOCCER LEAGUE PROGRAM AND VOLUNTEER INFORMATION

**GENERAL INFORMATION** - The Dublin Soccer League, a non-profit 501.c.3 corporation, is a member of the Ohio South Youth Soccer Association and is affiliated with the United States Soccer Federation. An eight-week fall season is played in September & October; a seven-week spring season in April & May.

**REGISTRATION** - Register by June 10th for fall; February 10th for spring. Registrations received after these dates may be subject to late fees and/or wait listing. A completed registration form with original parent/guardian signature and all fees paid is necessary for participation. Returned check charge is \$15. Players may sign up for fall, spring or both seasons (signing up for both is encouraged).

One reciprocal/mutual friend request (in the same age group) may be honored. **Turn in forms together.** Requests for a specific coach, team or practice night cannot be honored. The coach determines the practice day.

**DSL reserves the right to restrict entry, even if registration forms are received by the deadline, if the number of players exceed that which can be competently and efficiently managed or due to a lack of available volunteer coaches.**

**FEES:** Fees vary based on the program selected.

**REFUNDS:** Players (U5 - U12, MSSA and HSSA) who notify DSL in writing or email by June 30th for fall and February 10th for spring of their decision to withdraw may receive a refund, subject to a service charge. Parents are responsible for notifying DSL of withdrawals.

**TEAM PLACEMENT:** The player's date of birth is used to determine age group eligibility. Age group, school attendance area and/or a cluster of schools and geographical location is used to form teams. Availability of coaches is also factored into team assignments.

**UNIFORMS:** Shirt and socks are included with registration fees. Shorts may be purchased from DSL (subject to availability) Shin guards are required.

### **VOLUNTEER OPPORTUNITIES--**

DSL offers opportunities to attend coaching clinics as well as USSF coach licensing classes.

**Coach:** Seasonal year commitment; communicates game and league information to parents and players; coaches games, conducts practices, instructs players in basic soccer skills and rules of the game; exhibits good character around children, including refraining from the use of tobacco, alcohol and foul language. A completed Volunteer Disclosure Risk Management Form, telephone contact number and e-mail address are required.

**Co-Coach:** Assumes all the responsibilities of Coach but works with another coach volunteer as a team; reciprocal coach requests (same age group) may be indicated on the registration form; leaving the reciprocal line blank indicates you would be willing to share duties with anyone else.

**Office/Registration:** Assists with data entry, filing, phones, mailings, copying, or registration. Daytime availability necessary.

**Concessions:** Supplements high school booster volunteers during the DSL season or special events; sales, inventory, clean up, etc.

**Board Member:** Monitors league operations and reviews programs to fulfill DSL's mission; regularly attends board meetings. Nominations and elections held each fall.

**Miscellaneous:** Team Manager, Fields, Charity Cup Tournament, Publications, Technical Support, Special Projects, DSL Auxiliary.

### **RECREATION PROGRAMS—**

1. **U5 through U12.** All skill levels accepted; parent volunteer coached. U5 meets once a week and is an instructional introduction to soccer. U6 through U12 has one game and one practice per week. Saturday is game day. Spring tournament for U10 and U11/12. U12 may select either the standard program or MSSA if in Middle School.

2. **MSSA** (Middle School Soccer Association): U15 and under league play for boys and girls in middle school. All skill levels accepted; parent volunteer coached. Usually two games and one practice per week with some local travel; end of season tournament. No tryout required. Skill level assessment may be requested from previous coach or individual players. Weekday and Saturday games.

3. **HSSA** (High School Soccer Association): U19 co-ed play for high school (Grades 9-12). One game per week, some local travel; optional practices. All skill levels accepted; self-assessment. Players may not play on their high school team and in this program during fall season. Players on a "carded" travel team are not eligible for this program. Games are usually played on Sunday afternoons.

### **Age Group Eligibility for 2007 - 2008**

Players are expected to play in their age group. Proof of age required for players new to DSL (except HSSA). **Please note:** U5 through U10 are currently single age groups; U11/12, MSSA and HSSA are combined age groups.

<b>Age Group</b>	<b>Born</b>	<b>Program Format (subject to change)</b>
U5	8/1/02 - 7/31/03	Intro program
U6	8/1/01 - 7/31/02	3 v 3 no goalie
U7	8/1/00 - 7/31/01	4 v 4 no goalie
U8	8/1/99 - 7/31/00	6 v 6
U9	8/1/98 - 7/31/99	6 v 6
U10	8/1/97 - 7/31/98	6 v 6
U11/12	8/1/95 - 7/31/97	8 v 8
U15 & in MS	after 7/31/92	11 v 11 MSSA
U19 & in HS	after 7/31/88	11 v 11 HSSA

Mail completed registration materials (postmarked by June 10th) to:



Dublin Soccer League  
PO Box 501  
Dublin OH 43017

Or deliver in person to the office at 37 W. Bridge St, Suite 105, in old Dublin. DSL programs are wholly supported by registration fees and donations. The City of Dublin recognizes the Dublin Soccer League as the community provider of recreational soccer programs.

Office: 614-793-8320 (vm)  
www.dublinsoccerleague.com

Fax: 614-793-9626  
dublinsoccer@sbcglobal.net

**The MOSSL (Mid Ohio Select Soccer League)** has information on area club/travel soccer and tryouts for those interested in competitive travel soccer. Read the article on "How to Choose a Select Team" in the PDF Tryout Publication under *Tryouts*. Travel soccer does require a significantly greater commitment—financially, in participation time, and travel.

[www.columbussoccer.com](http://www.columbussoccer.com)

## FREQUENTLY ASKED QUESTIONS

**When does fall recreation start?** September 8th, the Saturday after Labor Day and continues for eight weeks.

**Do I sign up for both seasons?** Yes, if your child plans to **play** both seasons. "Fall only" players are sent reminders about spring fees and need to respond by the deadline to keep their spot on the team.

**When will my child hear from a Coach about Fall soccer?** Enjoy the summer first. Coaches receive their coach letter and team rosters in mid-August. Coaches are asked to contact their players promptly, introduce themselves and determine a practice day.

**Can my child be with the same teammates again?** One reciprocal/mutual friend may be indicated on the registration form. And, although the team names may change, many players frequently find they are with a number of former teammates. Roster sizes change with program formats, players come and go each year and coach volunteers also change. Teams are regrouped each fall to have a mix of returning players and players new to DSL. Returning U11/12, middle school and high school players generally stay together since more than a single age group is included on these teams. What happens when moving from one grade to the next? Some of the same people are in the new class, perhaps there's a different teacher but everyone's still in the same school.

**May my child play on more than one outdoor team?** Players may only play on the team to which they are assigned by the league. There are roster limits for each age group to insure that all players have the best opportunity for maximum playing time. Players from other leagues (including carded travel players) may not play on DSL recreation teams.

**Can I write one check for my entire family?** Yes. Make checks payable to DSL and please include your child/children's names on the memo line.

**What about uniforms?** The flat fee for U6 through U12 includes a t-shirt (50/50 blend) and socks. U5's receive Timbits shirts and socks. Uniforms are distributed in the Fall and used again for Spring. New players added in Spring receive their uniform at that time. Players moving up to the Middle School (MSSA) or High School (HSSA) programs for the first time or those in need of a replacement MSSA or HSSA shirt pay the higher fee listed on the registration form. Order a size roomy enough to fit over a turtleneck or sweatshirt and that will fit your child for the seasonal year.

**My child is trying out for a select/travel team, do I register for DSL?** Please wait until after tryouts to register if your choice is then the DSL recreation program. If your DSL registered child is later recruited to fill out a travel roster, please notify DSL.

**My child has decided not to play, what do I do?** Notify DSL *before* fall rosters are mailed to coaches in August. It's no fun for a team to play short handed because someone decides not to play at the last minute and there's no one else to assign to their team.

---

### OFF THE PITCH . . .

Thanks to Tim Hortons, sponsor of the U5 Timbits.

Thank you to all the Dublin High School booster groups who work concessions at Avery and Darree.

Children's Hunger Alliance is in need of soccer balls (any size) for use in their after school program, "Kix for Kids". If you'd like to donate, a collection box is at the DSL office.

Sports injuries in children and teens now account for at least 40% of all emergency room visits.

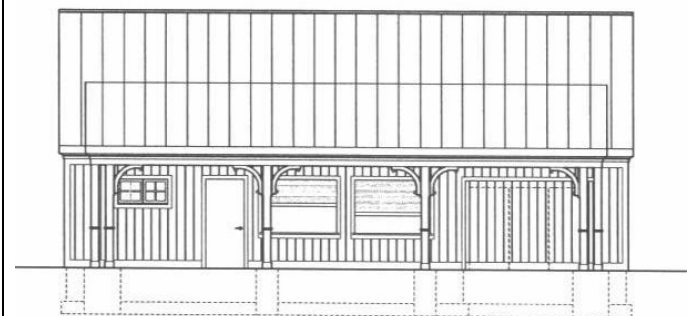
Of the 18 million Americans who play soccer, 78% (more than 14 million) are younger than 18 years of age.

Since 1996, over 18,000 player registrations have been entered into the DSL database.

A US Youth Soccer Convention, KINS (kicking is not soccer) presentation, video: [www.streamingportsnet.com](http://www.streamingportsnet.com), click on GA Soccer under Athletic Associations, then Player Development Philosophy (the 12/3/06 posting).

### DARREE EQUIPMENT/CONCESSION BUILDING

Plans are underway to construct a storage building with concession and vending capability at Darree Fields near Field 7. Stop in the office to see all the plans. Comments and suggestions welcome.



Ⓑ NORTH BUILDING ELEVATION  
SCALE: 1/4" = 1'-0"

Lend your expertise to this building project. Contact DSL.



## DUBLIN CHARITY CUP

This year's Dublin Soccer League sponsored Charity Cup tournament is scheduled for September 1st and 2nd at Avery Park and Darree Fields.

Now in its 18<sup>th</sup> year, more than 160 teams are expected to participate. Big Brothers Big Sisters of Central Ohio is the designated charity. Volunteers are needed for field marshals, concessions, team packet assembly, and clean up. Food vendor sites are also available at Darree. If you are interested in volunteering for this worthwhile event or need more information, please contact DSL by email or call 793-8320.

Just a bit of tournament history . . . In the first year of the tournament, 50 teams from U10 to U16 (boys) and U12 to U16 (girls) played at Avery Park. There were two Dublin teams as Champions (U13 Dublin Motion and U11 Dublin Invaders) and four as Runners Up. Net proceeds that year were donated to Cystic Fibrosis. In its third year, nearly 100 teams participated and the funds raised through entry fees, concessions, advertising and other donations benefited the Juvenile Diabetes Foundation.

Our thanks and appreciation to the dedicated Charity Cup committee, volunteers from BBBS and the City of Dublin for their continued support and cooperation in making this tournament a success.

## SOCCER SHORTS

During fall season, there were 189 DSL recreation teams, U5 through HSSA (U19) totaling 2184 registered and assigned players. DSL was also fortunate to have 15 adults without children in our programs volunteer to coach so that all teams had at least one coach. Many thanks to all our volunteer coaches.

During spring season, six U5 groups, four U6, two U7, three U8, two U9, three U10, one U11/12, one MSSA team and one HSSA team were added—that's about 443 new registrants added to new or existing teams. And, 6 more adults without children in the program also volunteered to coach.

Of all the players registered for spring, including many who registered after the deadline and were wait listed, there were only two U6 players and one U8 player who were not placed on spring teams.

Overall, there were 56 girls and 71 boys who decided, for various reasons, not to play either fall or spring. Coaches are asked to report any drops; however, parents are also requested to notify DSL so the "on paper" information is current and additional players, if available, may be added.

Once again, thank you to all our coaches and participants for another successful soccer season! Now, if only the weather during the season would cooperate . . .

**REGISTER NOW!  
2007 - 2008**

Non-Profit  
PRE-SORTED  
US POSTAGE  
PAID  
Permit No. 87  
Dublin OH

Dublin Soccer League  
PO Box 501  
Dublin OH 43017

